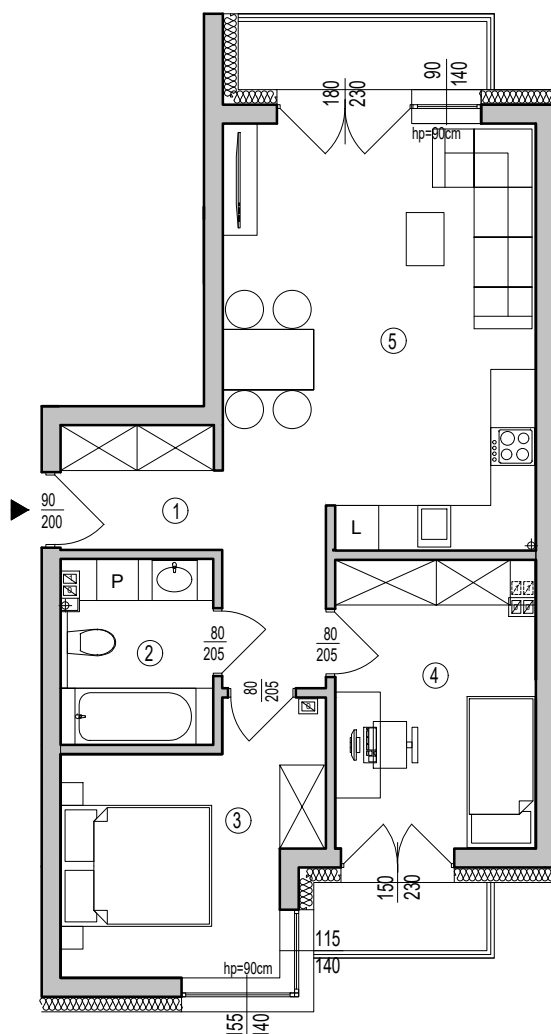
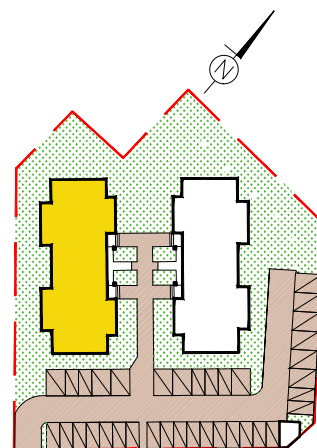


BUDYNEK MIESZKALNY A MIESZKANIE NR 9 I PIĘTRO 53,88m²



| MIESZKANIE NR 9 | | | |
|-----------------|-------------------|---------------------------|-------------|
| 1 | KORYTARZ | 6,99m ² | gres |
| 2 | ŁAZIENKA | 4,74m ² | gres |
| 3 | POKÓJ | 10,15m ² | panele |
| 4 | POKÓJ | 10,00m ² | panele |
| 5 | POKÓJ+ANEKS KUCH. | 22,00m ² | panele/gres |
| SUMA | | 53,88m² | |