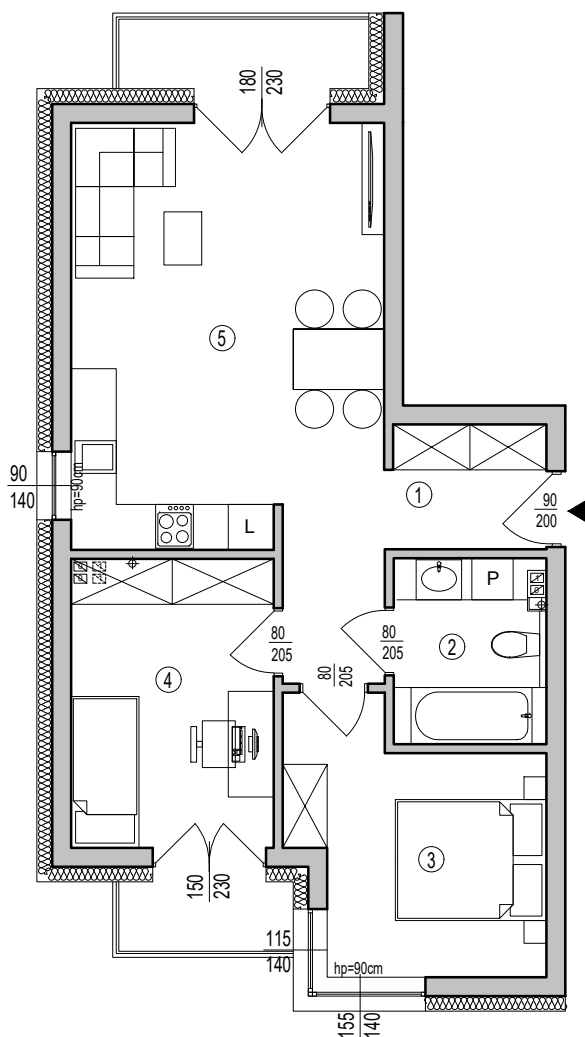
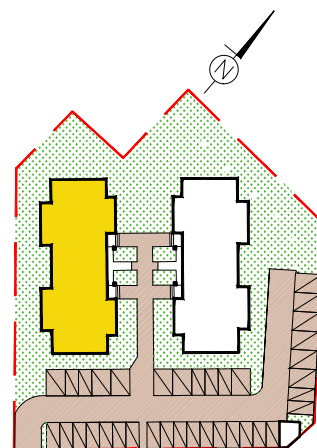


BUDYNEK MIESZKALNY A MIESZKANIE NR 7 I PIĘTRO 53,84m²



| MIESZKANIE NR 7 | | | |
|-----------------|-------------------|---------------------------|-------------|
| 1 | KORYTARZ | 6,84m ² | gres |
| 2 | ŁAZIENKA | 4,74m ² | gres |
| 3 | POKÓJ | 10,26m ² | gres |
| 4 | POKÓJ | 10,00m ² | panele |
| 5 | POKÓJ+ANEKS KUCH. | 22,00m ² | panele/gres |
| SUMA | | 53,84m² | |