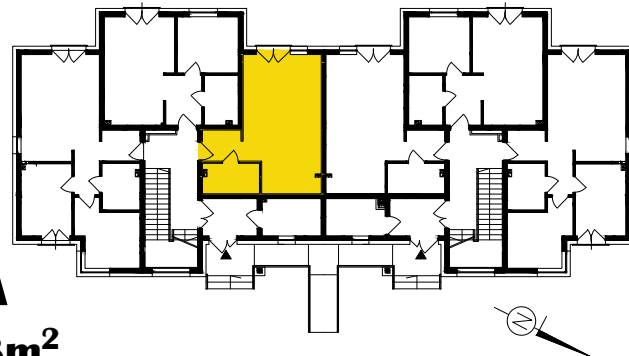
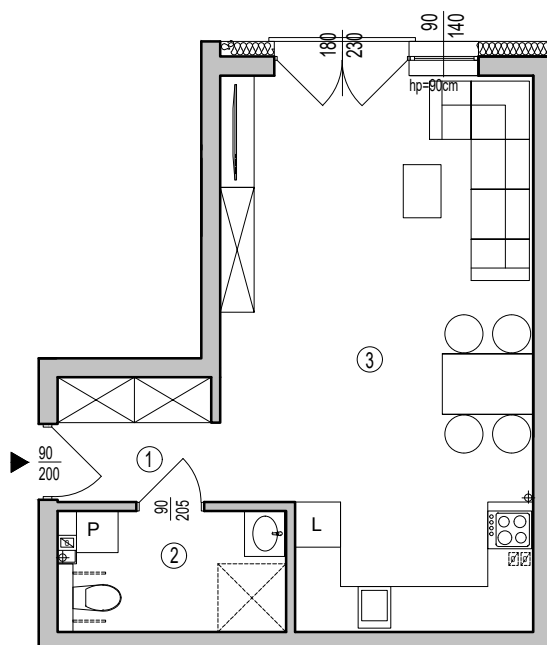
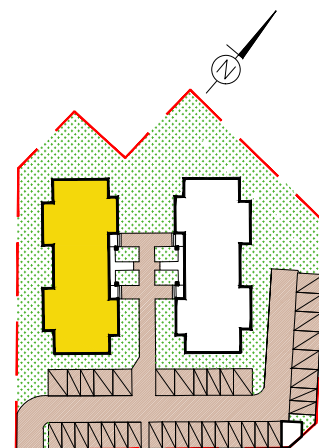


# OSIEDLE KSIĄŻENICE



## BUDYNEK MIESZKALNY A MIESZKANIE NR 3 PARTER 36,58m<sup>2</sup>



MIESZKANIE NR 3			
1	KORYTARZ	3,40m <sup>2</sup>	gres
2	ŁAZIENKA	4,63m <sup>2</sup>	gres
3	POKÓJ+ANEKS KUCH.	28,55m <sup>2</sup>	panele/gres
<b>SUMA</b>		<b>36,58m<sup>2</sup></b>	

MTG Agri-Rol S.A.

Książenice, Al. Marylskiego 96 [www.osiedleksiazenice.pl](http://www.osiedleksiazenice.pl) tel. 22 734-32-86